

Centre hikes copra MSP by ₹550/qtl

Also mulls import duty on wheat to protect farmers

PRESS TRUST OF INDIA

New Delhi, March 22

The Centre on Wednesday decided to increase the minimum support price (MSP) of milling copra by ₹550 per quintal to ₹6,500 for the 2017 season to boost coconut cultivation. Last year, it stood at ₹5,950 per quintal.

A decision in this regard was taken at the meeting of the Cabinet Committee on Economic Affairs (CCEA), headed by Prime Minister Narendra Modi.

The support price of 'ball copra' has been raised by ₹545 per quintal to ₹6,785, against ₹6,240 in 2016.

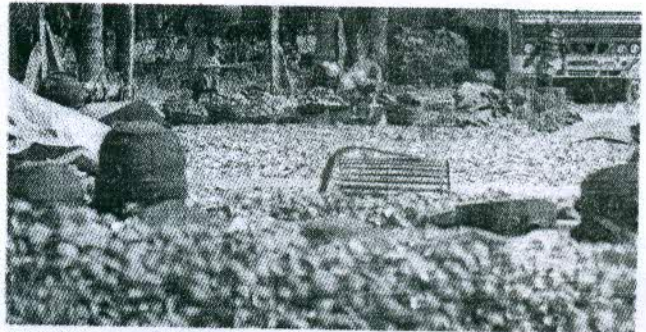
The copra MSP has been decided taking into account the recommendations of expert body Commission for Agricultural

Costs and Prices to ensure appropriate minimum prices to farmers and step up investment in coconut cultivation. The National Agricultural Cooperative Marketing Federation of India Ltd and the National Cooperative Consumer Federation of India Ltd will continue to act as central nodal agencies to undertake price support operations.

Wheat imports

Meanwhile, Agriculture Secretary Shobhana K Pattanayak said on Wednesday the Centre is considering imposing import duty on wheat in order to protect farmers amid projections of a record output this year.

On December 8, the government had reduced customs duty on wheat to zero from 10 per cent to boost domestic availability and check retail prices. Now that the country is all set to harvest a record production of 96.64 million tonnes in the 2016-17 crop



The milling copra MSP has been hiked to ₹6,500 a quintal to boost coconut cultivation (file photo)

year (July-June), there are concerns about prices coming under pressure once the new crop hits the market.

"Whether to propose import duty on wheat is in the final stage of consideration. The ministry is considering it. That is under process," Pattanayak told reporters on the sidelines of an Assocham event on integrated

water resources management.

Right now, the arrival of new wheat crop has begun in Madhya Pradesh. The crop is yet to arrive in other growing states, he said.

Asked about wheat prices, the Secretary said: "Prices at present are ruling above the MSP. State-run Food Corporation of India is going to procure on a massive scale to ensure MSP to farmers."

Centre considering import duty on wheat

New Delhi, March 22: The Centre is considering imposing import duty on wheat in order to protect farmers amid projections of a record output this year, Union agriculture secretary Shobhana K Pattanayak said.

On December 8, the government had reduced customs duty on wheat to zero from 10% to boost domestic availability and check retail prices.

Now that the country is all set to harvest a record production of 96.64 million tonnes in 2016-17 crop year (July-June), there are concerns about prices coming under pressure once the new crop hits the market.

"Whether to propose import duty on wheat is in the final stage of consideration. The ministry is considering it. That is under process," Pattanayak told reporters on the sidelines of an *Assocham* event on integrated water resources management.

Right now, the arrival of new wheat crop has begun in Madhya Pradesh. The crop is yet to arrive in other



growing states, he said.

Asked about wheat prices, the secretary said, "Prices at present are ruling above the minimum support price (MSP). State-run Food Corporation of India (FCI) is going to procure on a massive scale to ensure the MSP to farmers."

The Union food ministry is also closely keeping a watch on the arrival of the new crop. It has not firmed up its view on restricting imports as it wants to assess the availability of the new crop and its price trend before taking a final call.

Last month, Union food minister Ram Vilas Paswan had said: "The way this government has taken

On December 8, the government had reduced customs duty on wheat to zero from 10% to boost domestic availability and check retail prices

measures in the case of pulses and farmers are getting the MSP, all possible steps will be taken for wheat-growing farmers. If needed, raising import duty will be considered."

"Within two months of reduction of customs duty, 30-40 lakh tonnes of wheat has been imported. More than 55 lakh tonnes of wheat has been imported during this (financial) year," he had said.

The production of wheat is estimated at record 96.64 million tonnes in 2016-17 crop year against 92.29 million tonnes in 2015-16 on the back of good monsoon.

The previous record was 95.85 million tonnes in the 2013-14 crop year. *PTI*

Import duty on wheat likely: Agriculture secy

PRESS TRUST OF INDIA
New Delhi, 22 March

The government is considering imposing import duty on wheat in order to protect farmers amid projections of a record output this year, agriculture secretary Shobhana K Pattanayak said today. On 8 December, the government had reduced customs duty on wheat to zero from 10 per cent to boost domestic availability and check retail prices.

Now that the country is all set to harvest a record production of 96.64 million tonnes in 2016-17 crop year (July-June), there are concerns about prices coming under pressure once the new crop hits the market.

"Whether to propose import duty on wheat is in the final stage of consider-

ation. The ministry is considering it. That is under process," Mr Pattanayak told reporters on the sidelines of an Assocham event on integrated water resources management.

Right now, the arrival of new wheat crop has begun in Madhya Pradesh. The crop is yet to arrive in other growing states, he said.

Asked about wheat prices, the secretary said: "Prices at present are ruling above the minimum support price (MSP). State-run Food Corporation of India (FCI) is going to procure on a massive scale to ensure the MSP to farmers."

The food ministry is also closely keeping a watch on the arrival of the new crop. It has not firmed up its view on restricting imports as it wants to assess the avail-

ability of the new crop and its price trend before taking a final call. Last month, food minister Ram Vilas Paswan had said: "The way this government has taken measures in the case of pulses and farmers are getting the MSP, all possible steps will be taken for wheat-growing farmers. If needed, raising import duty will be considered."

"Within two months of reduction in customs duty, 30-40 lakh tonnes of wheat has been imported. More than 55 lakh tonnes of wheat has been imported during this (financial) year," he had said. The production of wheat is estimated at a record 96.64 million tonnes in 2016-17 crop year as against 92.29 million tonnes in 2015-16 on the back of good monsoon.

Govt considering imposing import duty on wheat: Agri Secy

NEW DELHI: The government is considering imposing import duty on wheat in order to protect farmers amid projections of a record output this year, Agriculture Secretary Shobhana K Pattanayak said on Wednesday.

On December 8, the government had reduced customs duty on wheat to zero from 10 per cent to boost domestic availability and check retail prices.

Now that the country is all set to harvest a record production of 96.64 million tonnes in 2016-17 crop year (July-June), there are concerns about prices coming under pressure once the new crop hits the market.

"Whether to propose import duty on wheat is in the final stage of consideration. The ministry is considering it. That is under process," Pattanayak told reporters on the sidelines of an



Assocham event on integrated water resources management.

Right now, the arrival of new wheat crop has begun in Madhya Pradesh. The crop is yet to arrive in other growing states, he said. Asked about wheat prices, the Secretary said, "Prices at present are ruling above the minimum support price (MSP). State-run Food Corporation

of India (FCI) is going to procure on a massive scale to ensure the MSP to farmers."

The Food Ministry is also closely keeping a watch on the arrival of the new crop. It has not firmed up its view on restricting imports as it wants to assess the availability of the new crop and its price trend before taking a final call.

Last month, Food Minister Ram Vilas Paswan had said: "The way this government has taken measures in the case of pulses and farmers are getting the MSP, all possible steps will be taken for wheat-growing farmers. If needed, raising import duty will be considered."

"Within two months of reduction in customs duty, 30-40 lakh tonnes of wheat has been imported. More than 55 lakh tonnes of wheat has been imported during this (financial) year," he had said.

The production of wheat is estimated at record 96.64 million tonnes in 2016-17 crop year as against 92.29 million tonnes in 2015-16 on the back of good monsoon.

The previous record was 95.85 million tonnes in the 2013-14 crop year.

PTI

